

STRIDE

Southeastern Transportation Research,
Innovation, Development and Education Center

T + H

Transportation + Health

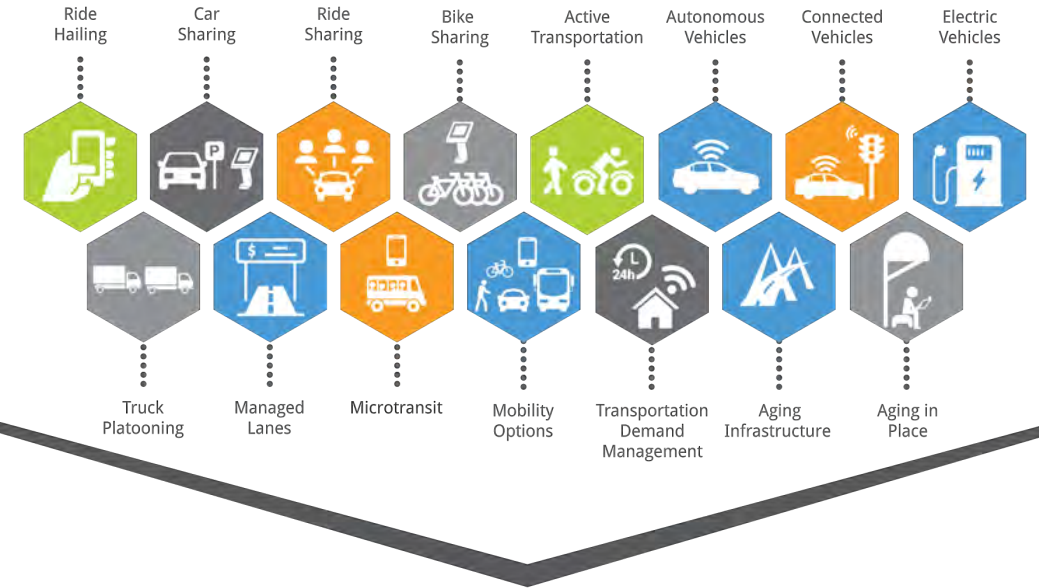
Urban Transportation Planning Process

**THE
CITADEL**



CIVL 642 Public Health, Physical Activity, and Design of the Built Environment

Transportation Planning Considerations:



Transportation Planning Process

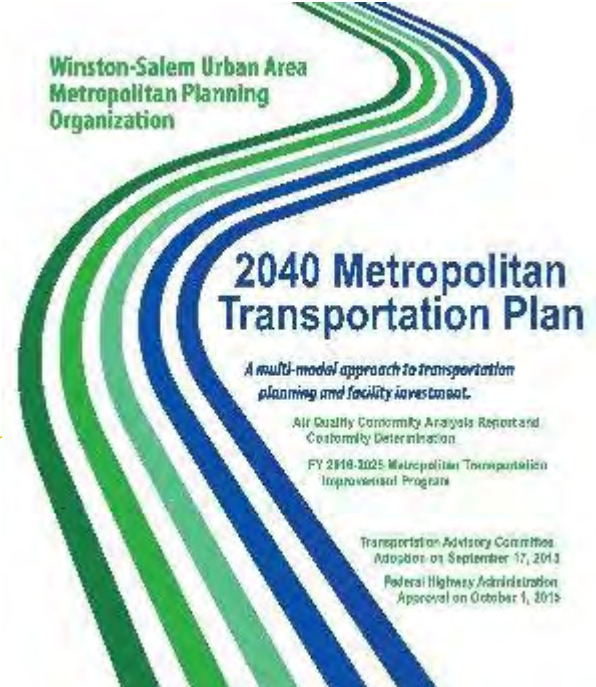
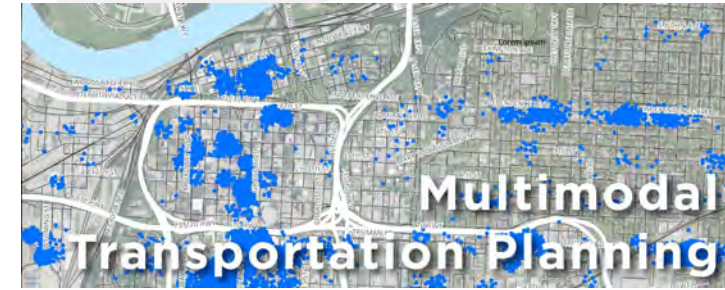
1. Planning procedures, jurisdictional priorities & policy decisions.
2. Funding methods & revenue sources.
3. Advocacy groups, professional societies & policy influences.
4. Understanding & navigating public policy process.

Transportation Planning Process:



Primary Driving forces in Urban Transportation Planning?

1. Critical to area's **economic & social health** by moving people & goods, sometimes used to revitalize economic activity of a targeted area.
2. Addresses **conflicting** vision and goals for jurisdictions in the same region, **balancing** differing motivations and perspectives.
3. Used to **incrementally** develop & build transportation network needed for the future.
4. Urban transportation planning is a regional process that engages all levels of government, as required by **federal regulation**.
5. Plan development is heavily informed by both **political & analytical** influences.
6. Federal laws require regional transportation planning (long-range planning) for large medium-sized urban areas to qualify for **federal highway & transit funding**.

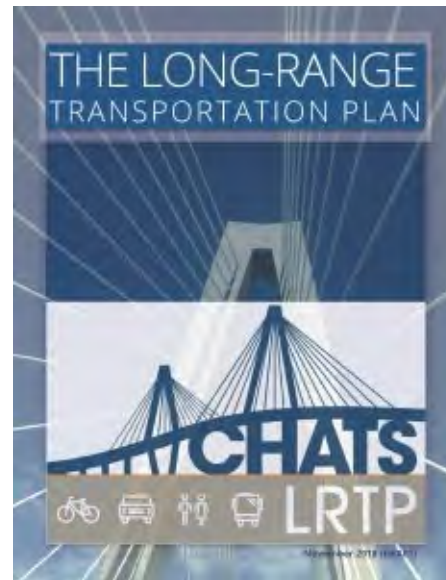


Elements of a Long Range transportation plan <https://www.baltometro.org/transportation/planning-areas/regional-planning-approach/federal-requirements-for-long-range-planning>

1. Current & projected transportation demand of persons & goods.
2. Existing & proposed transportation facilities that function as integrated system.
3. Description of performance measures and targets.
4. System performance report evaluating the condition and performance of the transportation system with respect to performance targets.
5. Operational and management strategies to transportation facility performance to relieve vehicular congestion and maximize safety and mobility of people & goods.
6. Congestion management process (CMP) <https://www.baltometro.org/transportation/planning-areas/management-operations/congestion-management-process>
7. Assessment of capital investment and other strategies to preserve existing & projected transportation infrastructure, for multimodal capacity & adaptation for natural disasters.
8. Transportation and transit enhancement activities.
9. Design concept & scope for cost estimates of existing & proposed transportation facilities
10. Potential environmental mitigation activities.
11. Pedestrian walkway & bicycle transportation facilities.

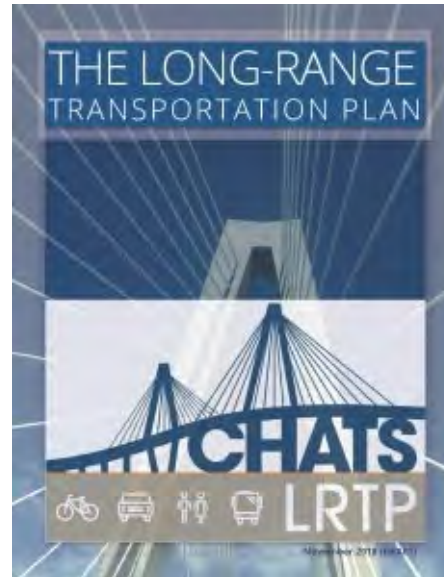
Agency Responsible for Urban Transportation Planning in Charleston metro area is BCDCOG <https://bcdcog.com/>

1. Board of Directors <https://bcdcog.com/committees/>
2. Membership
3. Policy Committee
4. Committees



Agency Responsible for Urban Transportation Planning in Charleston metro area is
BCDCOG <https://bcdcog.com/>

1. Long Range Transportation Plan <https://bcdcog.com/long-range-transportation-plan/>
2. Executive Summary – Performance Measures (linkage to PA)
3. Transportation Improvement Plan (TIP)
4. List of Federally Obligated projects



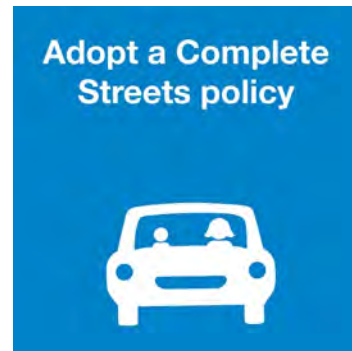
Public Participation and Influences of Advocacy

1. Charleston County Transportation Development <https://roads.charlestoncounty.org/>
2. SC Dept. of Transportation <https://www.scdot.org/projects/public-involvement-portal.aspx>
3. Coastal Conservation League <https://www.coastalconservationleague.org/>
4. Charleston Moves <https://charlestonmoves.org/>



Keys to Building Transportation Partnerships, Alliances & Coalitions

1. Bigger Alliances have higher change of successful outcomes
2. Advocacy and public awareness/education campaigns
3. Must include data analysis and objective methods
4. Focus on motivations and desirable outcomes
5. Structure initiative for Win-Win
6. Include strategic and tactical components for success
7. Include appeal to political leaders and build objective case for support
8. Identify policy changes and funding needs and build case for investment



SAFE LANE
TRANSPORTATION COALITION





Urban Transportation Planning Process

Thank You.

William J. Davis, Ph.D., P.E.

843 953 7687

jeff.davis@citadel.edu

www.citadel.edu/root/cee

THE
CITADEL

