

# Locating Where School Buses and Public Transportation Are Impacted by Congestion, Phase II

ITRE Project Team: Kai Monast, Jeremy Scott, Waugh Wright, Malikia Cherubala, Narmina Murphy

## WHY IT MATTERS

- ❖ Congestion causes delay for public transportation buses and school buses, reduces efficiency, and forces students and commuters to spend unneeded time traveling to their destinations.
- ❖ Congestion negatively impacts ridership experience due to higher bus fares, punctuality and reliability decline.
- ❖ For bus operators, decreases in operating speeds inversely increases operating costs.
- ❖ Improving the relationship between school and public buses is imperative to ensure continuation of these services



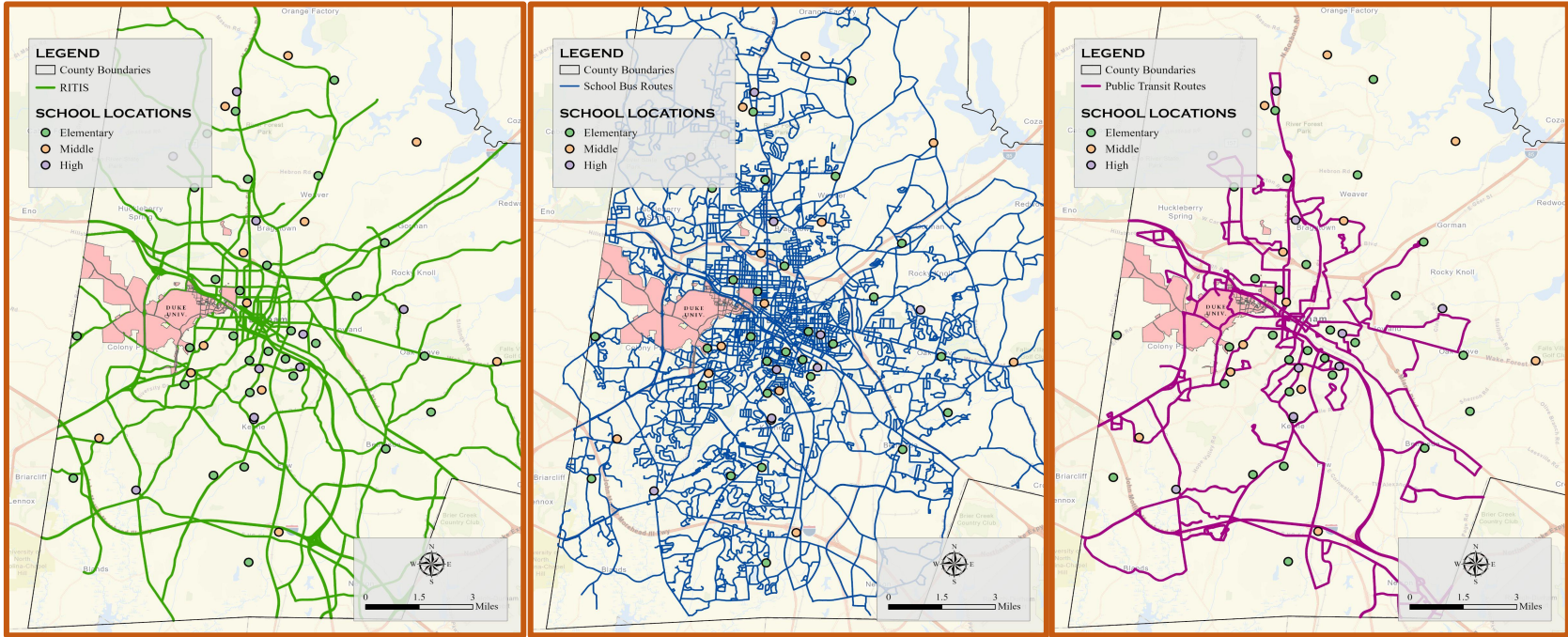
## Datasets

Calculated time of delay for all transit and school buses in Durham, North Carolina.

Regional Integrated  
Transportation  
Information System  
RITIS

Education Logistics Inc.  
Routing tool used by NC  
school districts  
Edulog

General Transit Feed  
Specification; Routing public  
transit on Google Maps  
GTFS

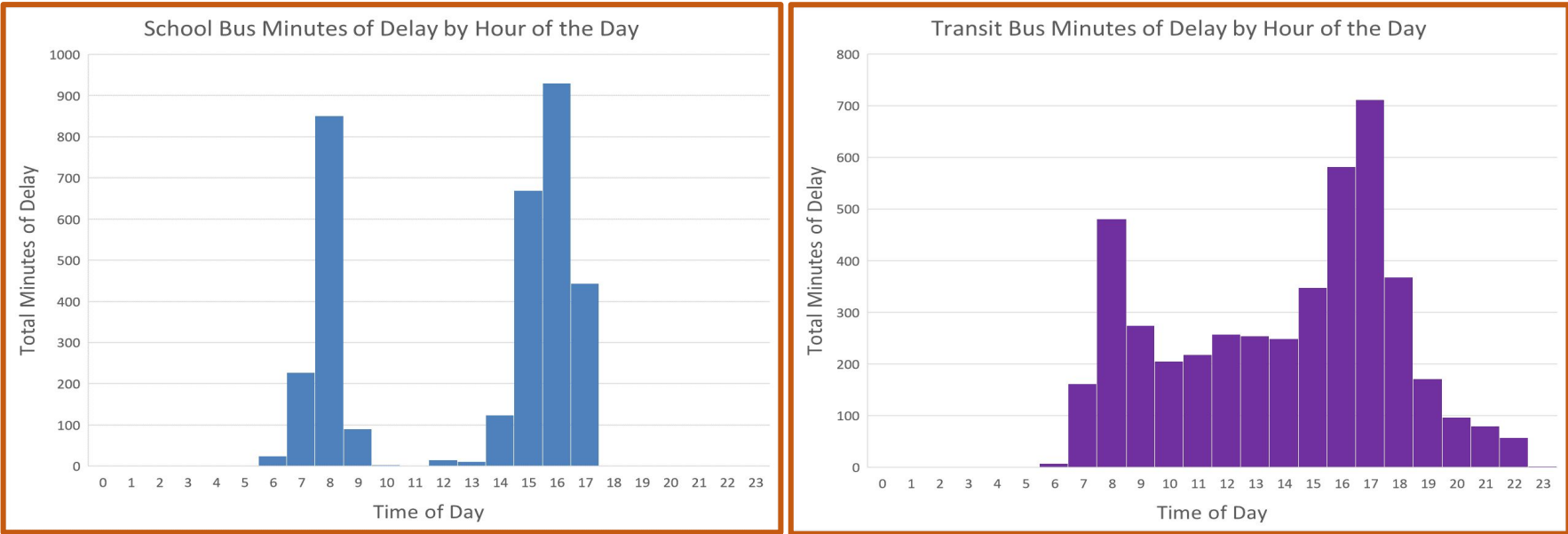


## Quantitative Results

### Web Mapping Application

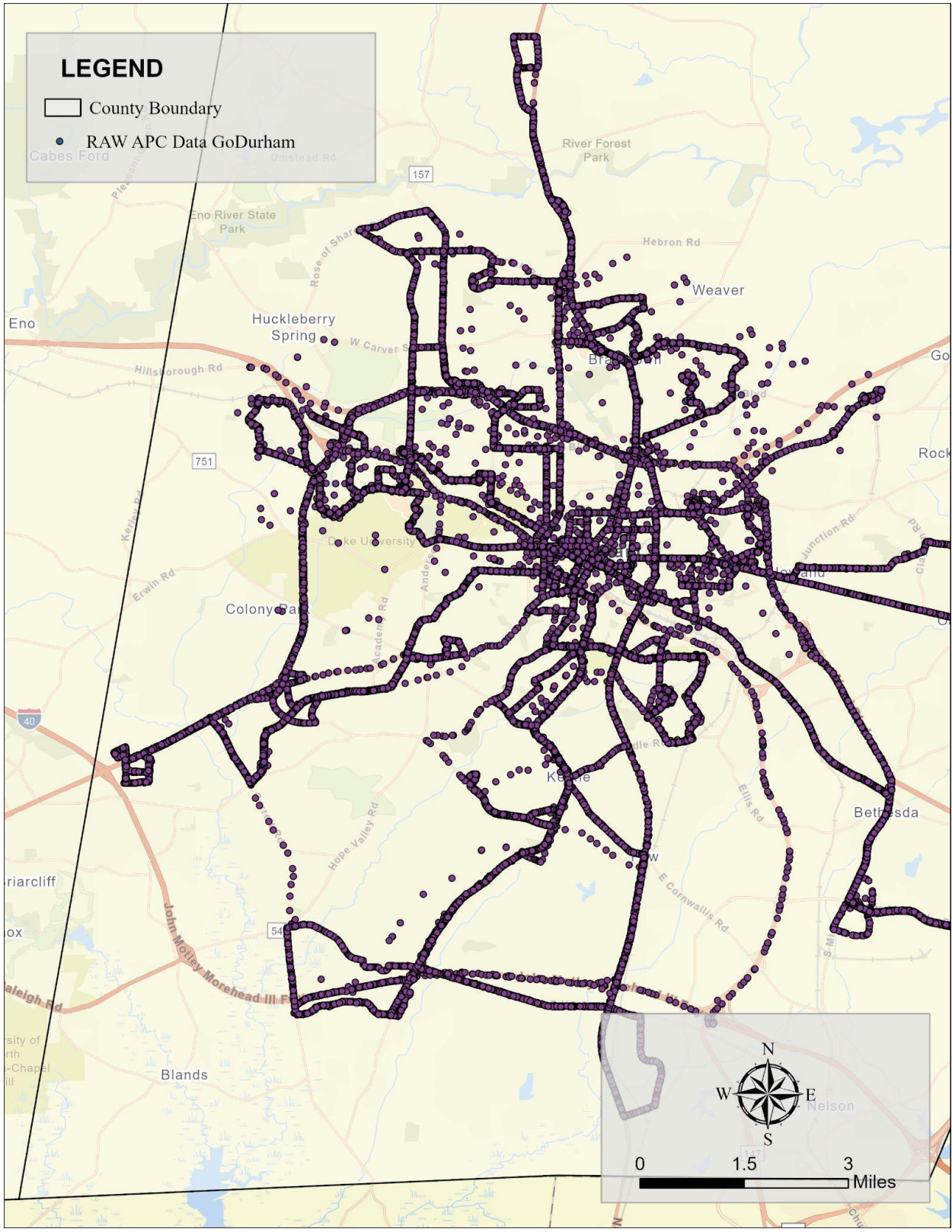
Allows planners to visualize congestion throughout the day and multiply the delay by the hourly operating cost.

### Daily Delay Profiles by Mode

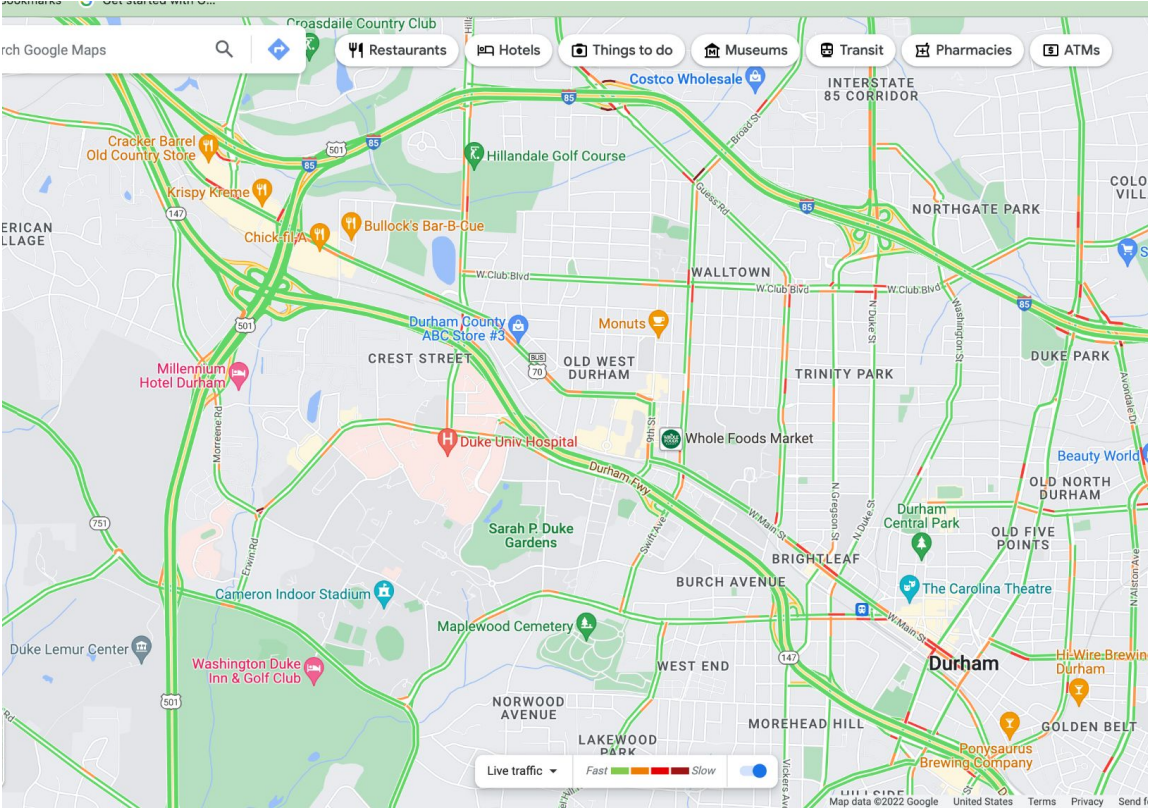


## Automatic Vehicle Location

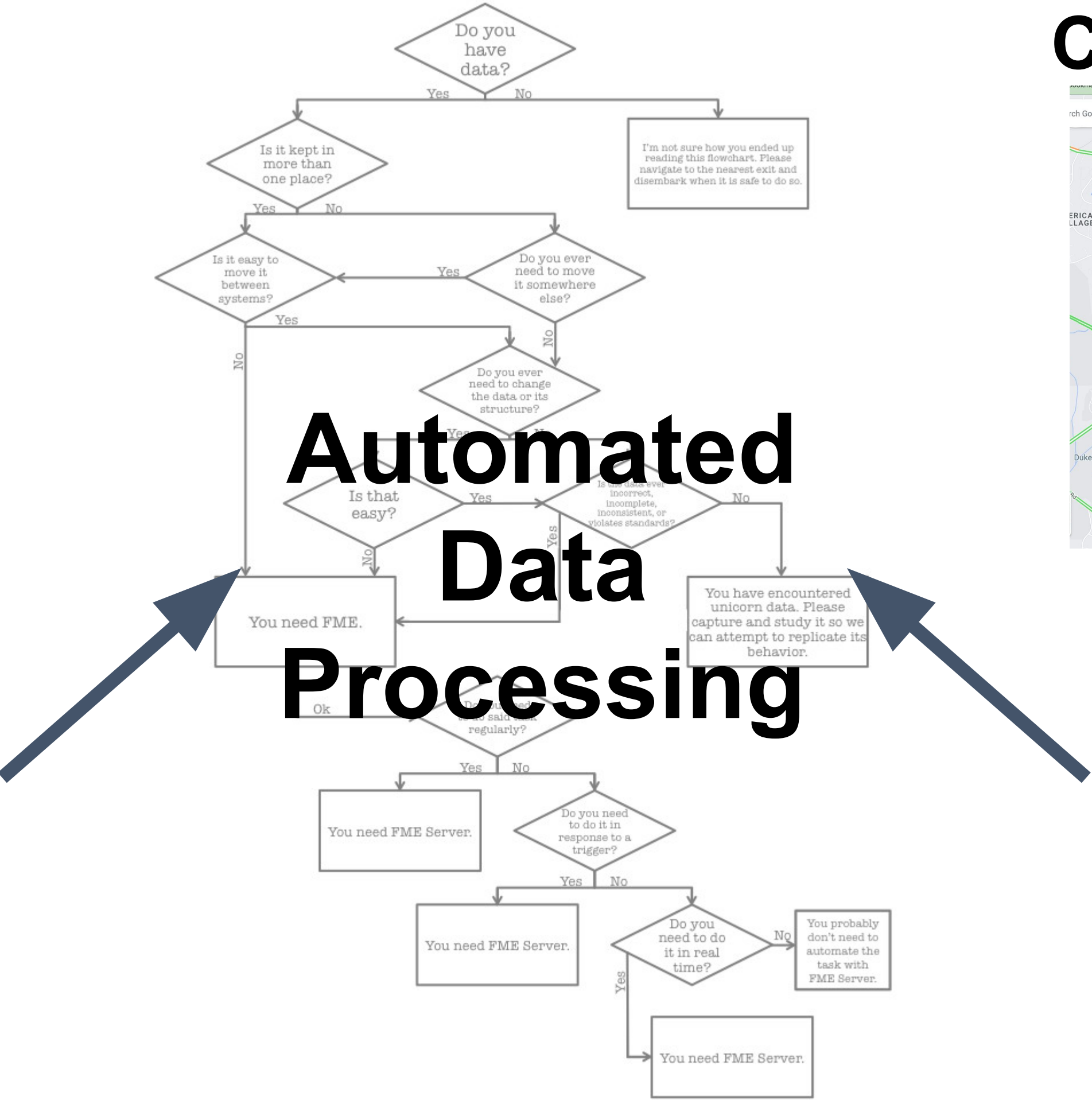
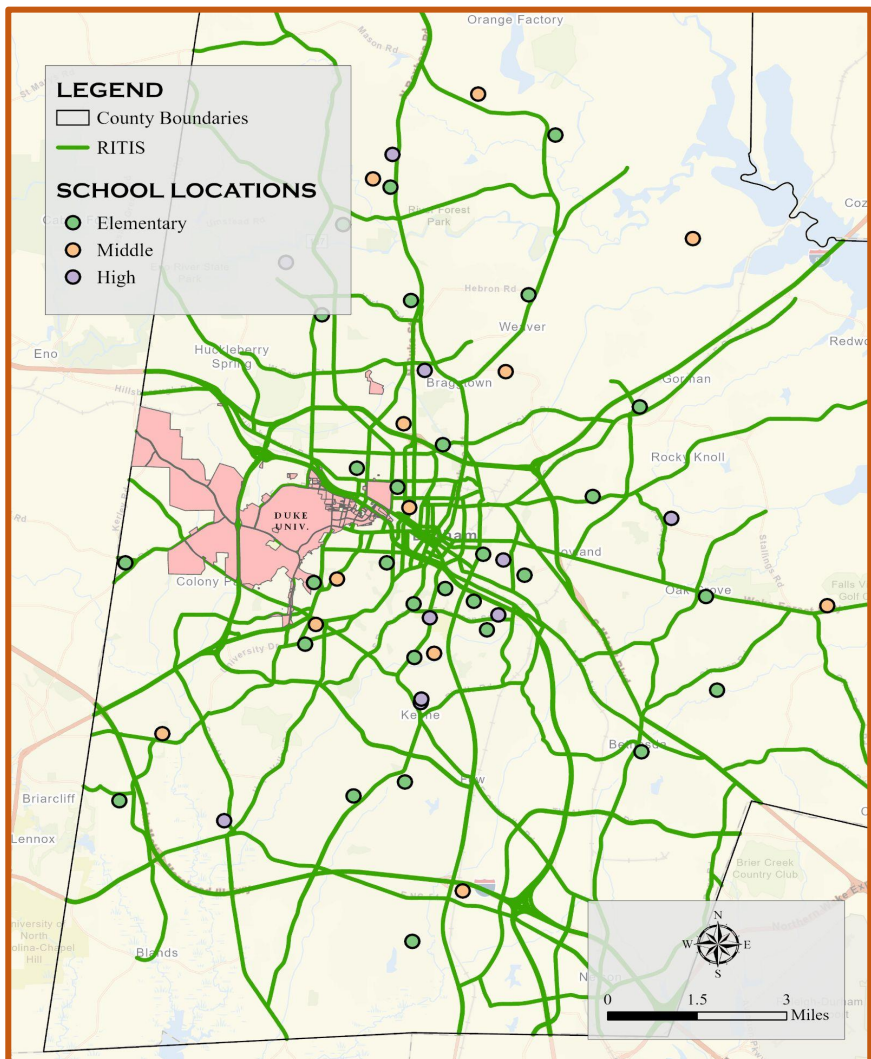
Common source data for public transit and school bus routes.



## Local Road Congestion Dataset

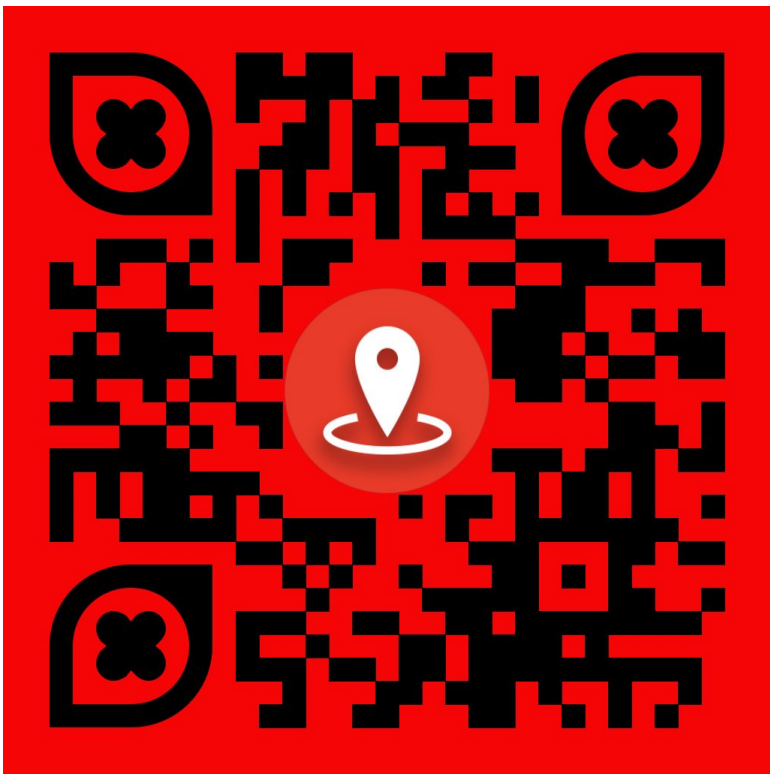


Vs



## Findings & Future Opportunities

- ❖ Modeling using widely-available resources allows for rapid calculations and can be conducted by those without strong GIS skills
- ❖ Combining transit and school buses increases the measured impact
- ❖ Slower speeds lead to increased journey time, decreased travel time reliability, higher costs, fewer passengers, and general service decline.
- ❖ Identifies where to explore use of bus-on-shoulder, bus lanes, signal prioritization and re-routing.



### Contact

Kai Monast, NCSU/ITRE  
[kcomonast@ncsu.edu](mailto:kcomonast@ncsu.edu)